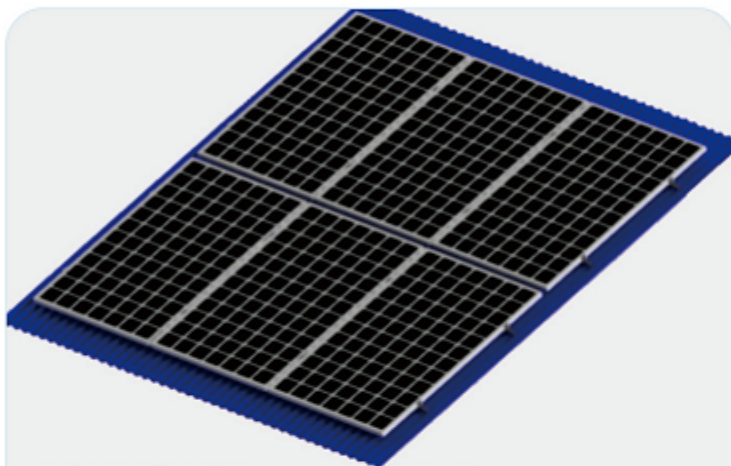




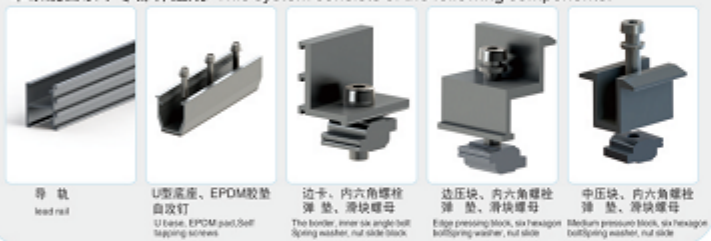
彩钢瓦屋顶支架 (U型支座)



产品说明/DESCRIPTION:

- 安装位置/Installation place:  
彩钢瓦屋面/Caigang watts roof
- 斜面支架组件/Module slop:  
根据实际需求/According to the practical demand
- 拉拔力/Drawing force:  
800N
- 风力承载能力/Wind load:  
40m/s、32.5kg/m<sup>2</sup>、13级
- 雪载承受力/Snow load:  
70kg/m<sup>2</sup>
- 支架类型/Module type  
框架/Frame
- 材料/Material:  
铝型材/Aluminium profile
- 颜色/Colour:  
本色/Natural
- 使用年限/Warranty time:  
25 years.

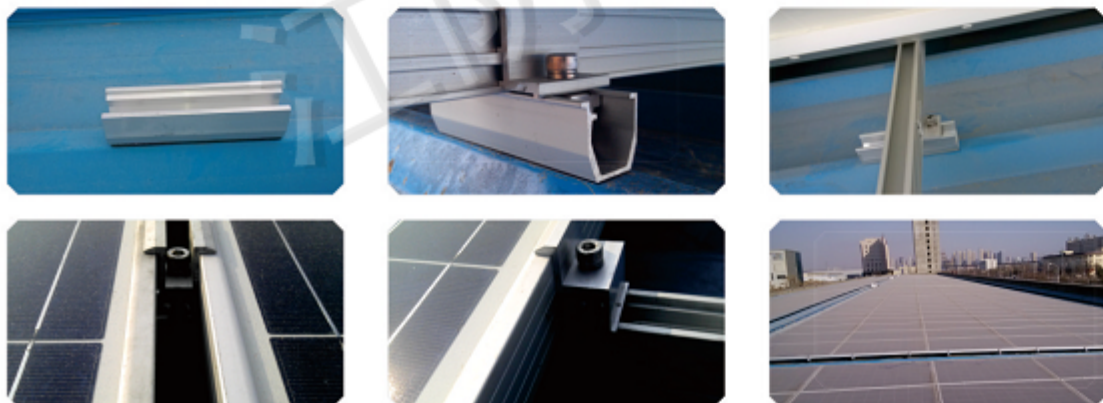
本系统由以下零部件组成/This system consists of the following components:



优势/ADVANTAGES:

1. 美观/Good Appearance.
2. 简便易安装/Easy and flexible Installation.
3. 多样化设计/Diversified Application.
4. 重量轻/Light dead-weight.
5. 节省安装材料/The mounting system materials are saved.

工程实例照片



1 第一步/First step

Will U support is fixed on the color steel tile with M5.5\*25 screw, as shown in figure 1:  
将U型支座用M5.5\*25螺钉固定在彩钢瓦上, 如图1所示:

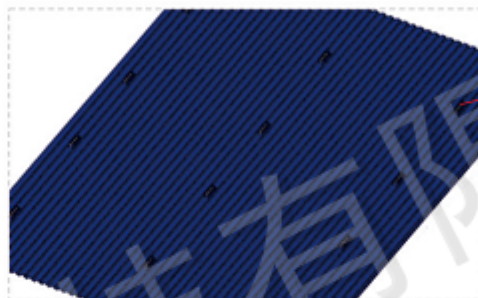


Figure 1 (a)

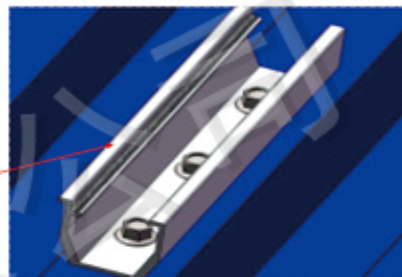


Figure 1 (b)

2 第二步/Second step

The guide rail is fixed on the U support with edges and inner six corner bolt, nut slide block, as shown in figure 2:  
将导轨用边卡及内六角螺栓、滑块螺母固定在U型支座上, 如图2所示:

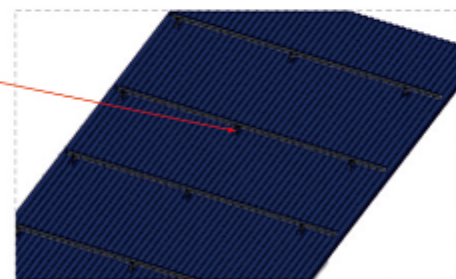
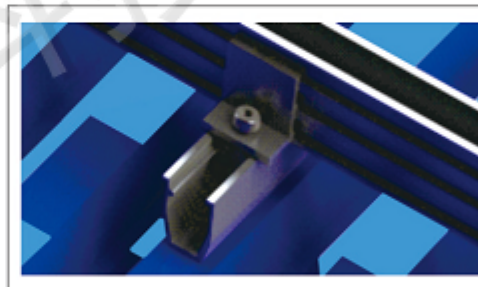


Figure 2

3 第三步/Third step

The component side pressing block and the middle block is fixed on the guide rail, as shown in figure 3:  
将组件用边压块及中压块固定在导轨上, 如图3所示:

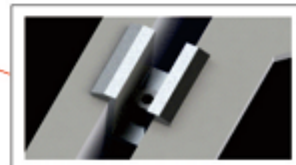
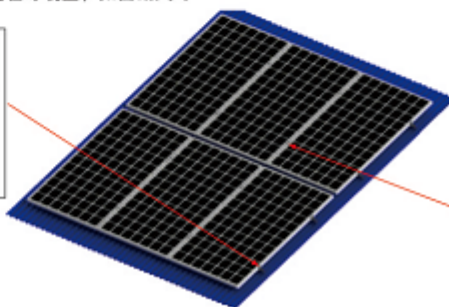
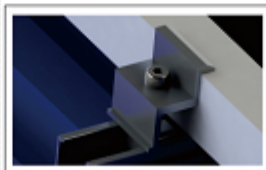


Figure 3